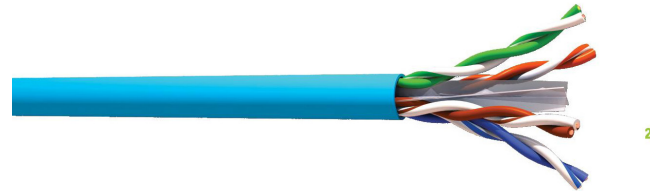
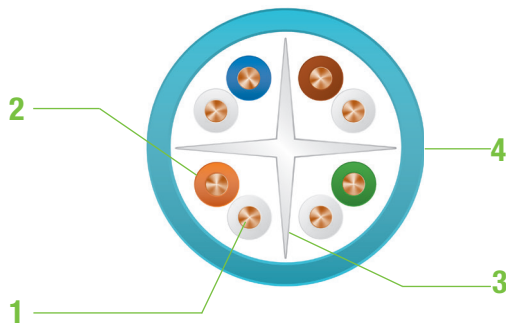




## VG6xSHy

100Ω U/UTP CAT6 4 pairs or 2x4 pairs cable 350MHz LSZH sheath



1. **Conductor** : solid bare copper AWG23
2. **Insulation** : PE HD
3. **Central member** : White or transparent thermoplastic cross
4. **Outer sheath** : LSZH - Light blue RAL 5024

## DESCRIPTIONS

U/UTP cable 4 pairs or 2x4 pairs, VG6xSHy, can be used in horizontal link or vertical configuration as backbone. It constitutes the base of a structured cabling network and can support all the IP application. Performances of the VG6xSH exceed the current standards, the cable is tested up to 350MHz.

## APPLICATIONS

Ethernet Base T up to 1Gbits/s	TOKEN RING 4/16 MBITS
ISDN	ATM 155, 622Mbits/s & 1.2Gbits
IEEE 802.3 af PoE	

## STANDARDS

CABLE	IEC 61156-5 CAT6
SYSTEME	ISO / IEC 11801 Ed2.2 Class E

## ELECTRICAL PROPERTIES

Max linear electrical resistance	95 Ω/Km
Mutual capacity (nom)	45 pF/m
Characteristic impedance	100 +/- 15Ω
Nominal Velocity Propagation	69%



## VG6xSHy

100Ω U/UTP CAT6 4 pairs or 2x4 pairs cable 350MHz LSZH sheath

### ENVIRONMENTAL PROPERTIES

CPR Level	Dca - s2,d2,a2
Fire behaviour	IEC 60332-1
Operating Temperature	-20°C / +70°C
Minimum bending radius	8 x cable diameter
Compliant to RoHS	

### TRANSMISSION PERFORMANCES @20°C

(\* standard : values from IEC 61156-5

Freq (Mhz)	Attenuation		NEXT (dB)		PS NEXT (dB)		ACR-F (dB)		PS ACR-F		RL (dB)	
	standard (*)	typical value	standard (*)	typical value	standard (*)	typical value	standard (*)	typical value	standard (*)	typical value	standard (*)	typical value
4	3.8	3.5	66.3	69	63.3	66	55.8	67	52.8	64	23.0	25
10	6.0	5.5	60.3	63	57.3	60	47.8	60	44.8	57	25.0	28
16	7.6	6.9	57.2	60	54.2	57	43.7	66	40.7	63	25.0	28
31.25	10.7	9.8	52.9	55	49.9	52	37.9	51	34.9	48	23.6	27
62.5	15.5	13.9	48.4	51	45.4	48	31.9	43	29.1	40	21.5	25
100	19.9	17.5	45.3	48	42.3	45	27.8	40	24.8	37	20.1	25
200	29.1	25.3	40.8	44	37.8	41	21.8	34	18.8	31	18.0	24
250	33.0	28.3	39.3	42	36.3	39	19.8	27	16.8	24	17.3	23

### ORDERING INFORMATION

CABLE 4 PAIRS			
P/N	DESCRIPTION	EXTERNAL DIAMETER	PACKAGING
VG64SHB	CAT6 CABLE U/UTP 4 PAIRS LSZH	5.5 mm +/- 0.4	BOX 305M
VG64SH5	CAT6 CABLE U/UTP 4 PAIRS LSZH		DRUM 500
VG64SHBRIB	CAT6 CABLE U/UTP 4 PAIRS LSZH		REEL IN BOX 305M

CABLE 2x4 PAIRS			
P/N	DESCRIPTION	EXTERNAL DIAMETER	PACKAGING
VG68SH5	CAT6 CABLE U/UTP 2x4 PAIRS LSZH	5.5 x 12.5 mm +/- 0.4	DRUM 500M