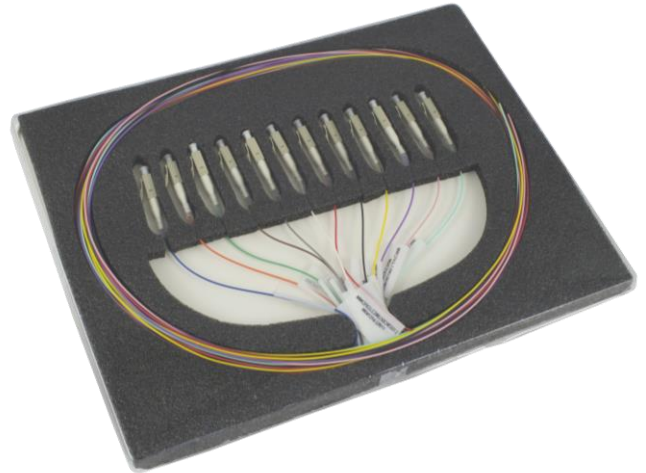
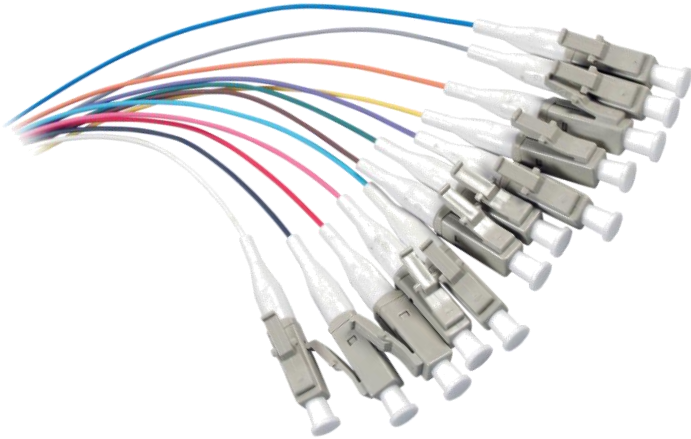


**P/N : PIG xxx 2 yyyBxF0**

Optical pigtailed multimode or singlemode with LSZH loose cable



P/N: PIGSC2OM1B12  
SC UPC 900µm Loose tube OM1  
(Other connectors available)

## Applications

MMC optical pigtailed cables are ideal for all multimode and singlemode applications. These pigtailed cables suit all types of multimode and singlemode networks, like Telecom, LAN (local Area Network) and WAN (Wide Area Network).

## General Characteristics

- Optically and mechanically compatible with all the equivalent connectors.
- Optical pigtailed cables with ceramic ferrule (ZrO<sub>2</sub>) and composite body (SC, LC, MU) or metal (ST,FC)
- Multimode or singlemode simplex optical cable
- LSOH loose tube coating 900µm with nail easy stripping on 1 meter length
- Individual test report and packaging
- Available in different lengths (standard is 2m)
- Packaging : 1x12 colors blister or 2x6 colors

## Standards compliance

- IEC 60874-20, IEC 60874-10, IEC 60874-14
- IEC 60793-2-50 B1.1, IEC 60793-2-10 A1a, IEC 60793-2-50 B1.3, IEC 60793-2-10 A1b, IEC 60793-2-10
- ITU-T G.651, CECC BFOC/2.5, ITU-T G.652D CECC
- ISO/IEC 11801 2<sup>nd</sup> Ed. Amd 1.0, Amd 2.0
- Bellcore/Telcordia GR-326 (reduced),
- TIA/EIA 568, EIA/TIA 492AAAB, EN 50173-1:2002
- With no hazardous substances as detailed in ROHS 2002/95/EC

## P/N : PIG xxx 2 yyyBxFO

Optical pigtails multimode or singlemode with LSZH loose cable

### Pigtail general characteristics

Range temperature :	- 10°C to +65°C,
Mating cycles:	> 500 cycles
Color of sheath	6 or 12 colors according to IEC 60304 standard (FOTAG)
Fiber version	Loose tube
Colour of boot	Beige (SC) Black (ST) or White (LC)
Return Loss	> 25 dB
Insertion Loss (Attenuation)	< 0.25 dB

### Connectors technical characteristics

Types	ST, SC, LC, FC, MU, SCA, FCA, LCA
Material of ferrule	ZrO <sub>2</sub> (Zirconia / Ceramic)
Connector surface	Convex or angled
Insertion loss	<0.20dB
Material of body	Metal (ST, FC) or composite (SC, LC, MU)
Ferrule drilling	125/126µm (singlemode) 127/128µm (multimode)

### Optical cable mechanical properties

Weight	0.7kg/km
Temperature range	-10°C to +65°C
Bending radius	30 mm
Tensile strength	3 N
Crush resistance	0.1N (long term) – 1N (short term)

### Optical cable performances

Parameters		OM1	OM2	OM3	OM4	OS2
Core diameter	µm	62.5	50	50	50	9
Cladding diameter	µm	125	125	125	125	125
Typ. Attenuation @ 850nm	dB/km	≤ 3.2	≤ 2.7	≤ 2.7	≤ 2.7	≤ 0.35
Typ. Attenuation @ 1300nm	dB/km	≤ 0.9	≤ 0.7	≤ 0.8	≤ 0.8	≤ 0.22
Bandwidth @ 850nm	MHz * km	> 200	> 500	> 1500	> 3500	
Bandwidth @ 1300nm	MHz * km	> 500	> 500	> 500	> 500	
EMB* @ 850nm	MHz * km			> 2000	> 4700	
Chromatic dispersion @1285-13300nm	Ps/(nm*km)					≤ 0.35
Chromatic dispersion @ 1550nm	Ps/(nm*km)					≤ 0.22

### Ordering information

Part Numbers structure	<b>PIG xxx 2 yyyB12FO or PIG xxx 2 yyyB2X6FO</b>
Choose the number of colors	B12 for 12fo cable or 24of – B2X6 for 6fo cable
Replace <b>xxx</b> by connector type	Standard connectors are : ST,FC, SC, LC, MU, SCA, FCA, LCA
Replace <b>yyy</b> by the type of fiber	OM1,OM2,OM3,OM4,OS2