

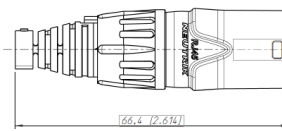
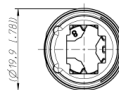
## NE8MXB1

Connector Cable PLUG RJ45 CAT.6



### + ADVANTAGES

- RJ45 system for harsh environments
- Protects Ethernet connections in a variety of commercial applications and is designed to prevent breakage of fragile RJ45 connector components



## DESCRIPTION / APPLICATIONS

- Sound system
- Lights
- Signage and LED screens

## STANDARD

**CONNECTOR :** Certified ENEC - IEC 60320  
and certified UL498

**INFLAMMABILITY :** UL 94 V-0

## MECHANICAL / TECHNICAL PROPERTIES

**LIFETIME:** > 1000

**INSERTION FORCE :**  $\leq 20$  N

**WITHDRAWAL FORCE :**  $\leq 20$  N

**CABLE O.D. :** 3.5 - 8 mm

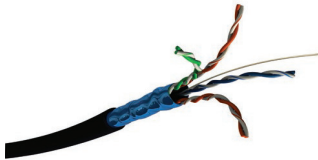
**SHELL :** Zinc diecast

**TEMPERATURE RANGE :** -30°C à +80°C

## ASSOCIATED PRODUCTS



**MMCRJP8BLMER1 or MMCRJ45SC5UNIV**  
RJ45 CAT.5e Plugs



**AUDIOLAN24**  
Gigabit Ethernet Cable



**AUDIOLAN**  
CAT.5e Cable

## ORDER INFORMATION

PART NB	DESCRIPTION	PACKAGING
NE8MXB	CABLE CONNECTOR PLUG RJ45 CAT.6	Individually