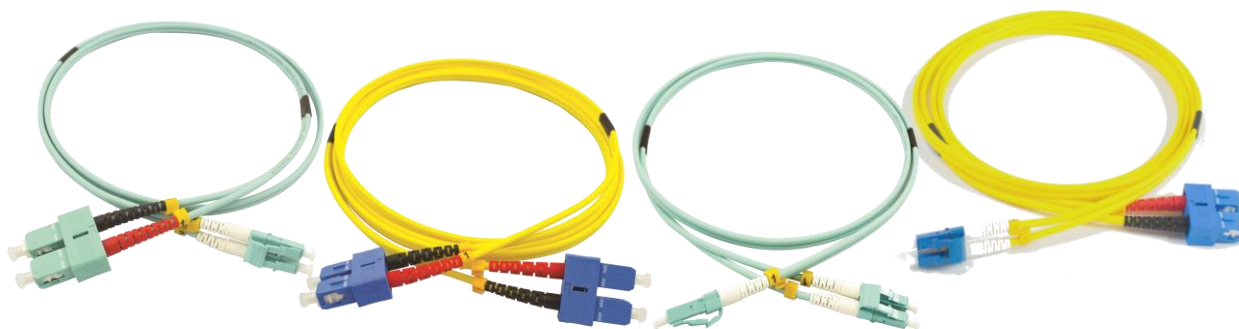


P/N: EJ xxX xxX yy zzz

Cost effective optical duplex LSZH patchcords



EJLCSC1DOM3

EJSCSC3DOS2

EJLCLC1DOM3

EJLCSC3DOS2

Applications

The cost effective optical patchcords perfectly fit singlemode and multimode transmission modes. Those patchcords offer an attractive solution and bring some benefits that will give full satisfaction to the users for all types of networks such as backbone or distribution cabling links between floors or buildings, from switch to switch or from video cameras to monitoring rooms.

General characteristics

- Duplex zipcord optical patchcords, multimode or singlemode
- Available in OM2, OM3, OM4 et OS2
- Possible combination between ST, SC, FC & LC connectors
- Compliant with ROHS standards
- Performances as per ISO, IEC & EIA-TIA related norms.

Physical properties

- Duplex patchcords with Ø 3.0mm zipcord cable
- Cable jacket and fiber strings with LSZH compliance
- Red and black boots with SC connectors, to identify Tx & Rx
- White boots and numbered rings with LC connectors
- Supplied with RL/IL individual test report
- Packaging : unit zip bag

Ordering information

Part numbers' structure	EJ xxX xxX yy zzz	Packaging
Replace xx by the connector left & right	UPC connectors : ST, SC, FC, LC (autres sur demande)	Unit
Replace X by A for APC	APC 8° connectors: SC, FC, LC	
Replace yy by the length in meters	From 1 to 100 meters	
Replace zzz by the type of fiber	OM1, OM2, OM3, OM4, OS2	
Lengths available ex stock	1m / 2m / 3m / 5m / 10m	