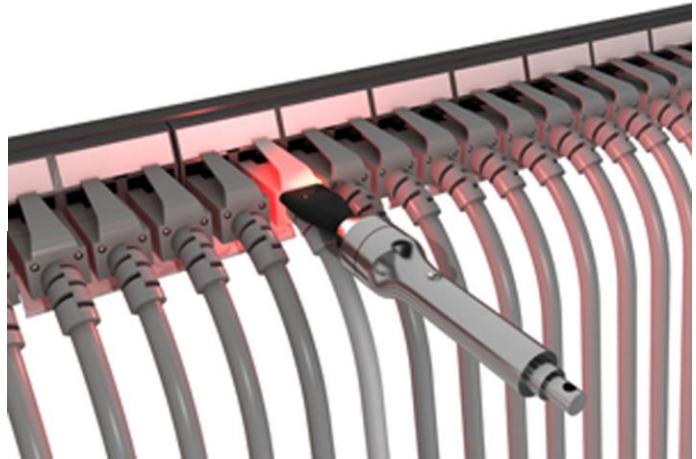
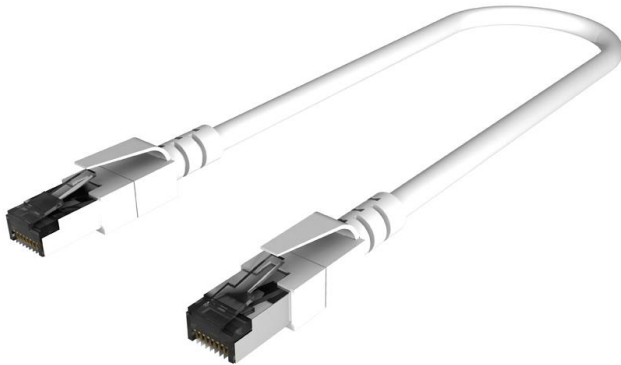


## REF : CORD6ASxLED

LED Identification CAT6A shielded patch cord



### Description

Lighting by LED thanks to an electric power, the LED activation tool (LEDTOOL) transmits this power using two electric wires :

- Unique LED based identification system
- The MMC detector plugged at one end of the patch cord, immediately activates the LED at the other end, enabling immediate identification
- The activated plug is clearly visible from 2/3 m distance
- This system helps the maintenance of high density data cabinets and data centres
- Exceed CAT6A standard specifications
- Shielded cable – pairs assembled with separator
- Special high-performance plug
  - Wire termination on two levels to ensure improved NEXT performance
  - 8C gold-plated contacts 50µ
  - Individual shielding of pairs maintained in the plug thanks to unique separators
  - Moulded plugs
- Available in 5 lengths as standard

### Characteristics

<b>Fire Behaviour</b>	IEC 60332-1 / NF C 32070 C2
<b>Minimum bending radius</b>	8 x outer diameter of cable
<b>Temperature range</b>	-20°C to +70°C
<b>Conformity to RoHS directive</b>	

## REF : CORD6ASxLED

LED Identification CAT6A shielded patch cord

### Electrical requirements

TECHNICAL CHARACTERISTICS								
Frequency (MHz)	NEXT (dB/100m)				RETURN LOSS (dB / 100 m)			
	1 m	2 m	5 m	10 m	1 m	2 m	5 m	10 m
1	65.0	65.0	65.0	65.0	19.80	19.80	19.80	19.80
4	65.0	65.0	65.0	65.0	21.61	21.61	21.61	21.61
10	65.0	65.0	64.5	62.9	22.80	22.80	22.80	22.80
16	62.6	62.0	60.5	59.0	23.41	23.41	23.41	23.41
20	60.7	60.1	58.6	57.2	23.70	23.70	23.70	23.70
31.25	56.9	56.2	54.9	53.6	23.05	23.05	23.05	23.05
62.5	51.0	50.4	49.2	48.1	20.04	20.04	20.04	20.04
100	47.0	46.4	45.3	44.4	18.00	18.00	18.00	18.00
200	41.1	40.6	39.8	39.3	15.0	15.0	15.0	15.0
250	39.2	38.8	38.1	37.6	14.0	14.0	14.0	14.0
300	36.4	36.2	35.9	35.8	12.8	12.8	12.8	12.8
400	31.8	31.9	32.1	32.5	10.9	10.9	10.9	10.9
500	28.2	28.4	29.0	29.8	9.5	9.5	9.5	9.5

### Related product

<b>LEDTOOL</b>	LED activation tool
<b>LEDCOIN</b>	Coin cell for LED activation tool
<b>LEDCOLx</b>	Colored marking sets for plugs

### Ordering informations

Reference	<b>CORD6ASxLED</b>
Colour	Grey
X = lenght	1 m – 2 m – 3 m – 5 m – 10 m
Packing	Unit