

## ASBNEP1701

19" Cat6A communication pack for offices installations

### + BENEFITS

- Ready to use pack: complete solution for cabling LAN installations
- Ideal solution for businesses, especially the small tertiary sector
- Easy assembly and installation



Assembled  
in France



## DESCRIPTION / APPLICATIONS

- This kit is the ideal tool for installations of Internet or Ethernet network type (Cat6A RJ45)
- Thanks to its tool-less RJ45 connectors and its Cat6A cords, the space in the box is optimized.
- The included 10/100 BASE-TX 24-ports switch is ready to use and requires no configuration.

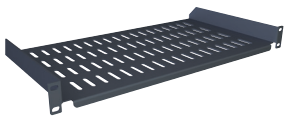
## CONTENTS OF THE PACK



- 1 wall mounted 9U cabinet
- Width: 600mm
- Depth: 450mm
- Glass door with lock



- 1 plastic power supply 6 sockets with switch
- 1U 19"
- 2m cord



- 1 modem plate 19"
- 1U depth 250mm
- Load capacity 25kg



- 24 RJ45 Cat6A FTP cords



- 24 RJ45 Cat6A shielded Female connectors
- Tool-less connection
- Keystone format



- 1 switch 24 ports 10/100Base TX
- Format 19"



- 1 patch panel 24 ports 19"
- Mass recovery
- Labeling area



- 1 x19" management panel 4 crogs



- 2 bags of 10 M6 \* 14 screws with cage nuts

## ORDERING INFORMATION

REF	DESCRIPTION	PACKING
ASBNEP1701	Communication pack 19" Cat6A for small and medium installations	Unit