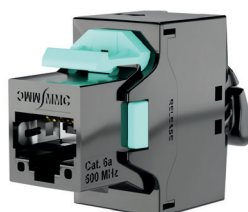


5X8FSx

CAT8 360° shielded RJ45 Keystone Jack

+ BENEFITS

- Excellent transmission performance up to 40Gbit/s on a Class I link (30m)
- Sustainability of the installation thanks to its multi-exits flange
- Time saving: easy to connect

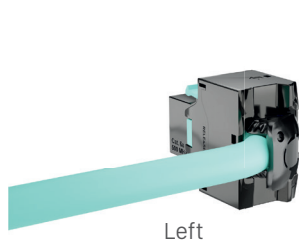


DESCRIPTION / APPLICATIONS

The 5th generation of MMC connectors, the 5X range is designed to be high performance, high quality, innovative, easy to use and modular.

The 5X8FSx connector has been designed with our latest dual circuit PCB technology, allowing for electrical compensation that will provide excellent NEXT margins.

In order to adapt perfectly to all the configurations of your installations, a rear flange, unique on the market, allows multiple exits while respecting the bending radius of the cable.



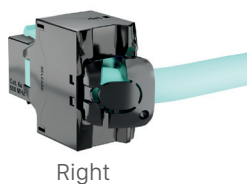
Left



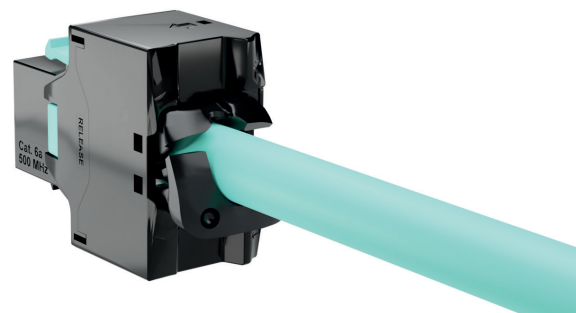
Up



Down



Right



Straight

PERFORMANCES

STANDARDS
ANSI/TIA/EIA-568.2-D CAT8
ISO/IEC 11801 Category 8
EN 50173-1
IEEE 802.3bt (4pPoE)
IEC 60603-7-81 CAT8

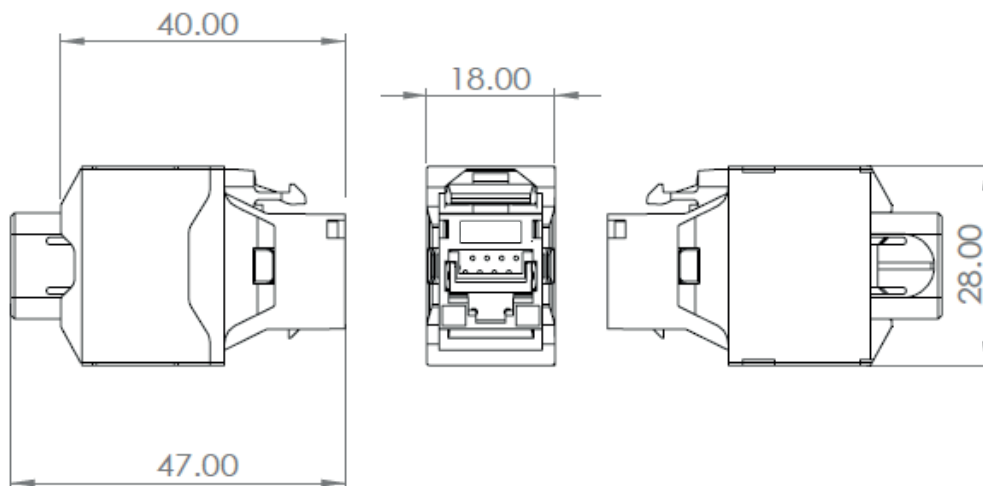
TECHNICAL PROPERTIES

Blades	PPS +40%GF original (fiberglas)
IDC	Bronze + Platinum / Cu
Section	AWG23 - AWG22
Contact	Gold 50μ"
Color code	T568A & B

ELECTRICAL PROPERTIES

Contact resistance	< 20 mΩ IEC 60512-2-1 Test 2a
Insulation resistance	> 500MΩ @100V DC IEC 60512-3-1 Test 3a
Voltage	> 1000V DC contact to contact >1500V DC contact to mass (IEC 60512-4-1 Test 4a Method A)
Insertion cycle	750 times RJ45 plug in, >200 times RJ12
Operating voltage	< 72V DC
Allowable power	90W (4pPoE) - Tests IEC 60512-99-002:2019 2A per wire
Operating temperature	-10°C to +60°C

DIMENSIONS



RELATED PRODUCT

PART NUMBER	DESCRIPTION	PACKING
5XPAN1U	19" 24 port RJ45 patch panel - 5X RANGE	1
CORD8A23SFxMSH	CAT8 S/FTP LSZH xx m AWG 23 Patch cord	1

x : Available in 1m / 2m / 3m

ORDERING INFORMATION

PART NUMBER	DESCRIPTION	PACKING
5X8F58	RJ45 CAT8 360° shielded connector - 5X RANGE	8