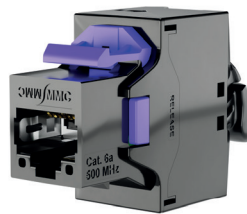


5X6AFSx

CAT6A 360° shielded RJ45 Keystone Jack

+ BENEFITS

- Excellent transmission performance that allows 100% ratio on link tests
- Component and 4PPoE certified connector
- Sustainability of the installation thanks to its multi-exits flange
- Time saving: easy to connect

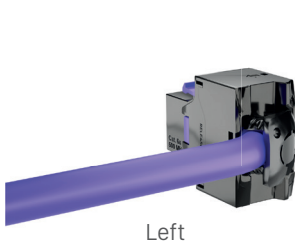


DESCRIPTION / APPLICATIONS

The 5th generation of MMC connectors, the 5X range is designed to be high performance, high quality, innovative, easy to use and modular.

The 5X6AFSx connector has been designed with our latest dual circuit PCB technology, allowing for electrical compensation that will provide excellent NEXT margins.

In order to adapt perfectly to all the configurations of your installations, a rear flange, unique on the market, allows multiple exits while respecting the bending radius of the cable.



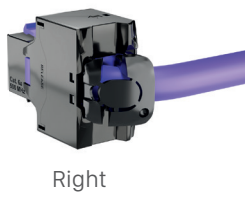
Left



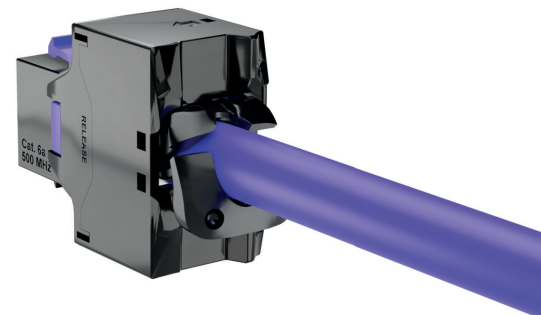
Up



Down



Right



Straight

PERFORMANCES

STANDARDS
ANSI/TIA/EIA-568.2-D CAT6a
ISO/IEC 11801-1:2017 Category 6A
EN 50173-1
IEEE 802.3bt (4pPoE)
IEC 60603-7-5 CAT6A

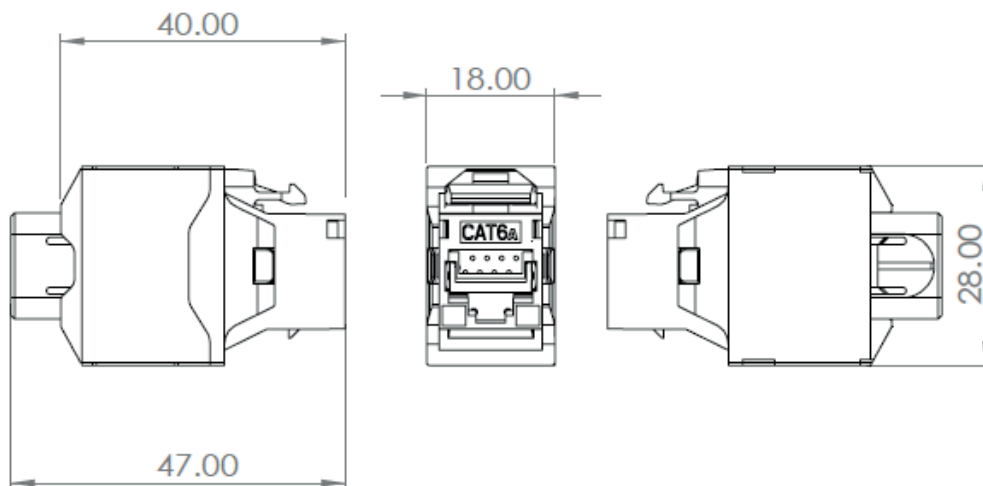
TECHNICAL PROPERTIES

Blades	PPS +40%GF original (fiberglass)
IDC	Bronze + Platinum / Cu
Section	AWG23 - AWG22
Contact	Gold 50μ"
Color code	T568A & B

ELECTRICAL PROPERTIES

Contact resistance	< 20 mΩ IEC 60512-2-1 Test 2a
Insulation resistance	> 500MΩ @100V DC IEC 60512-3-1 Test 3a
Voltage	> 1000V DC contact to contact >1500V DC contact to mass (IEC 60512-4-1 Test 4a Method A)
Insertion cycle	750 times RJ45 plug in, >200 times RJ12
Operating voltage	< 72V DC
Allowable power	90W (4pPoE) - Tests IEC 60512-99-002:2019 2A per wire
Operating temperature	-10°C to +60°C

DIMENSIONS



RELATED PRODUCT

PART NUMBER	DESCRIPTION	PACKING
5XPAN1U	19" 24 port RJ45 patch panel - 5X RANGE	1

ORDERING INFORMATION

PART NUMBER	DESCRIPTION	PACKING
5X6AFS8	RJ45 CAT6A 360° shielded connector - 5X RANGE	8
5X6AFS48	RJ45 CAT6A 360° shielded connector - 5X RANGE	48