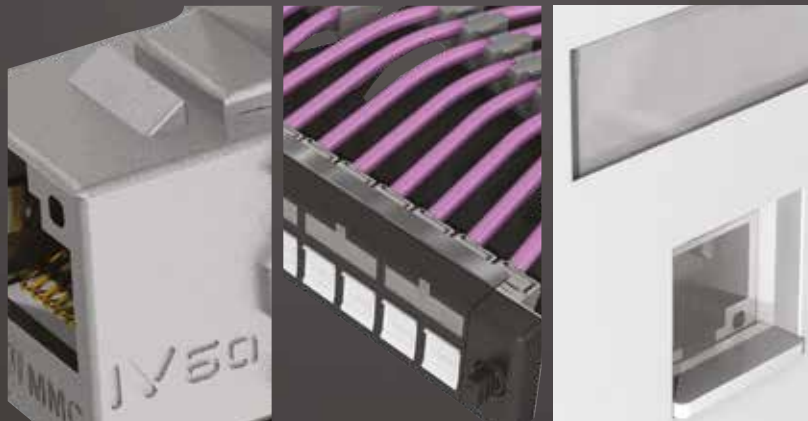
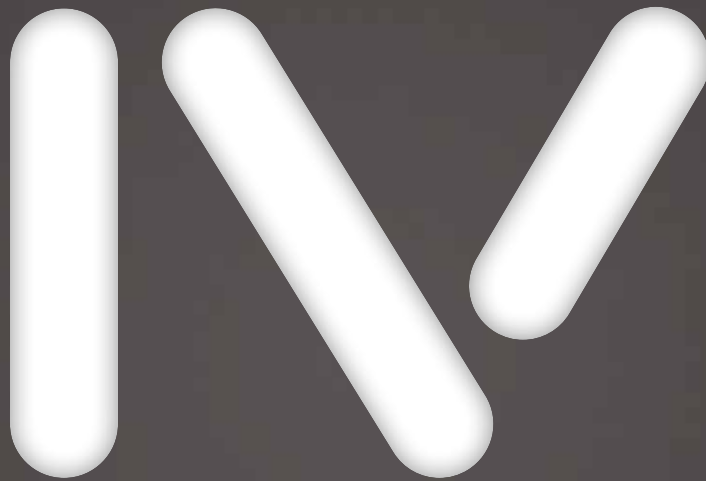




Smart and simple cabling solutions

IV COPPER RANGE

The innovative vision of cabling system



member of the TKH Group <

MMC INNOVATION BACKGROUND FOR MANY YEARS

Since 1993, Multimedia Connect has been a structured cabling system manufacturer designing and producing communication solutions for intelligent buildings, that enhances IP convergence.

Quality & Innovation are the directions chosen by Multimedia Connect to offer accurate cabling from Enterprise to Datacenter.



Headquarter



Bare fiber factory

Innovation

Since its creation, Multimedia Connect has always been at the forefront of product innovation. We were among the first manufacturers to certify a Category 6 connector (in 2002) and a Category 6a (ISO) connector (in 2010). In addition to the performance of our systems, our R&D efforts are focused on designing solutions which facilitate installers and end-users work.

Keep it simple

With Multimedia Connect, Technology means simplicity. We are pioneers in developing toolless terminations and our goal is to create products and systems that are easy to install and easy to manage.



The opportunities

The development of IP (Internet Protocol) in applications such as CCTV, Access Control, Public Address, Video, Audio... means that structured cabling systems are now used in a large field of new environments and applications.

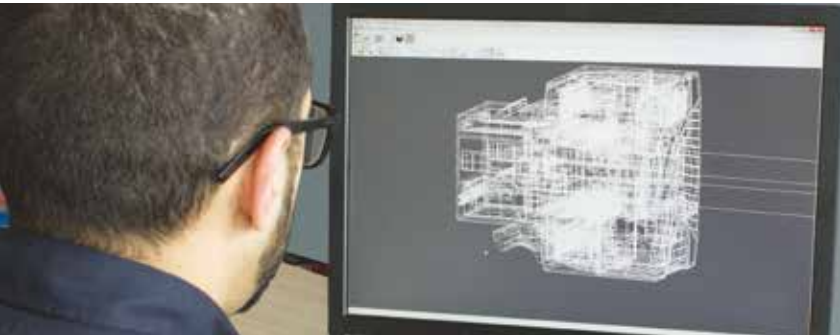
Multimedia Connect has identified this fundamental trend in our industry and we are developing specific products and systems which facilitate the convergence between cabling infrastructures and these new IP applications.



MMC THE MADE IN FRANCE TOUCH

Multimedia Connect owns a 2.000 m² production facility specialised in connectivity. Based in the French Alps (Haute Savoie), our production unit is ideally located in a valley known for plastic injection work. The Arve valley also named “plastic valley” is near the Swiss border and this neighbourhood brought a specialisation in micro mechanics, and the screw cutting industry in particular.

Connectivity maker for 17 years



With a high-skilled R&D department specialised in signal processing, we develop and produce a full range of copper connectivity and accessories.

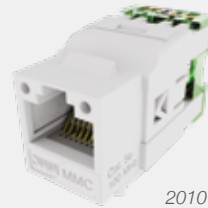
Since 1998: From the MULTI[®] to the BCTL range.



1998 - MULTI[®]



2008 - MK



2010 - BC



2012 - BCTL

With a production capacity of more than several million connectors a year, this unit is dedicated in tailored copper links, audio/video cables and industrial cables.

A seal of quality

ISO 9001 certified, Multimedia Connect integrates quality and processes in the core of its strategy to answer to normative requirements (IEC 60603, ISO11801) and to satisfy the end users.

Connectors are tested according to the “Re Embedded” method tests in order to provide the electrical performances among the best on the market.



The entire range of Multimedia Connect connectivity is certified by an independent laboratory to guarantee a constant quality and performance complying with international cabling standards.

IV: INNOVATION FOR 4TH GENERATION OF CONNECTIVITY

IV6a

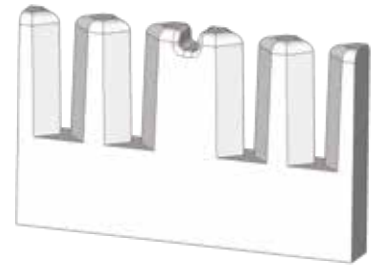
Multimedia Connect new range of copper connectivity is the result of a fruitful R&D work in order to offer an InnoVating and performing solution which responds to our “Smart and Simple” philosophy.

MMC launches its fourth generation of connectivity: IV6AFS, 360° shielded CAT6A RJ45 connector.



The first 100% toolless connector

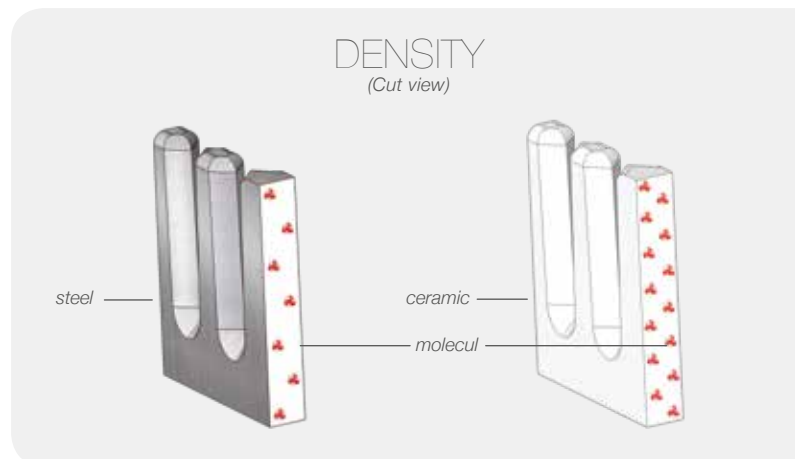
Multimedia Connect wants to revolutionize the habits of installation and termination: IV6AFS connector has two ceramic blades to enable wire cutting without the use of any tools.



The IV6AFS connector is the very first 100% toolless connector !

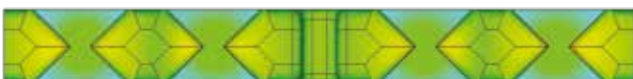
Because such concept requires a sharp and hard material, Multimedia Connect decided ceramic. Its crystalline network and molecular density offer indeed the best technical solution.

The ceramic has a higher density and a molecular structure based on covalent links which is not the case with steel. These two characteristics bring an extreme hardness to the blade which allows connections and disconnections without risk of breakage.

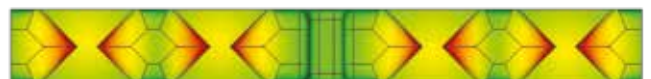


The high thermal coefficient of the ceramic blade ensures an excellent resistance to crack propagation, preserving the sharpness of the blade even after several connections:

Before cutting



After 10 cuttings



The high density limits the molecular agitation

A COMPLETE AND PERFORMING SOLUTION

Performance at the heart of the system

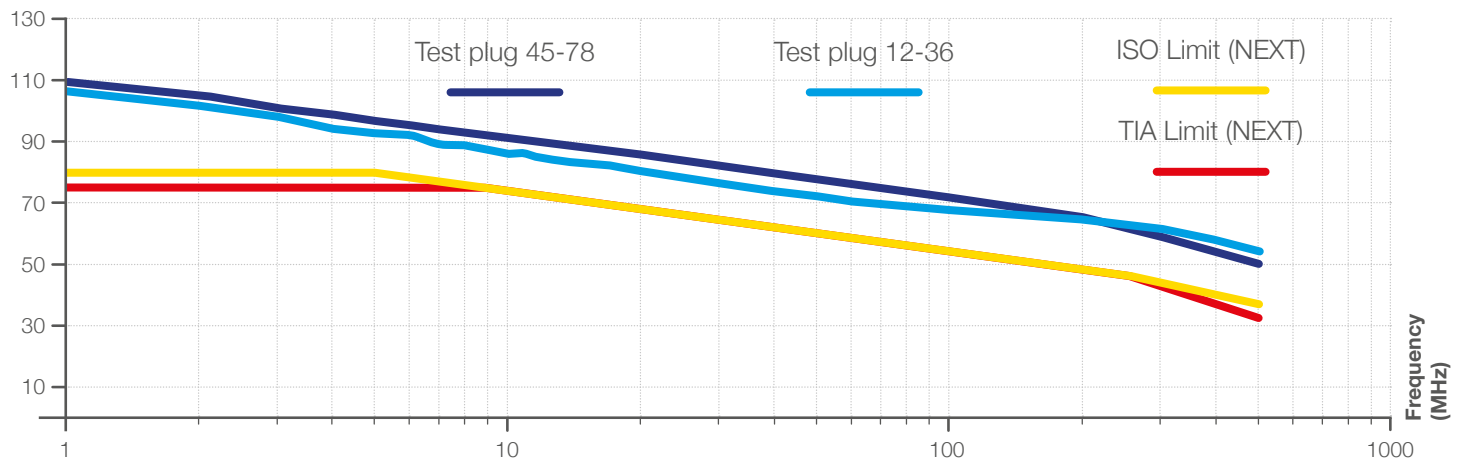
The growing demands of end users for high speed and bandwidth force the manufacturers to accelerate their efforts to find the best electrical compensations for RJ45 connectivity.

Even if the Category 8 is not ready yet, the electrical development of the IV6AFS has been led to meet the **CAT8** and its **40Gbps**.

Tests made on IV6AFS connectivity show outstanding electrical performances offering security margins among the bests on the market, and high speed far superior to 10Gbps.

«Component» measure

NEXT (dB)



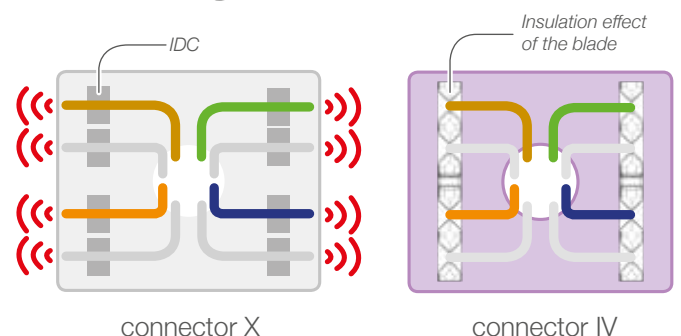
The core used on the IV benefits from the last methods of electrical compensation based on a 4 layers PCB.

Tests led on a link equipped with IV6AFS connector associated to a Multimedia Connect CAT6A cable (as F555xSH or FU510xSH) showed NEXT value up to 10dB.

Ceramic: “first class” insulating material

Beyond its hardness & resistance, the ceramic has the advantage to be electrically neutral. The neutrality of its electrical charges avoids capacitive phenomena at high frequencies.

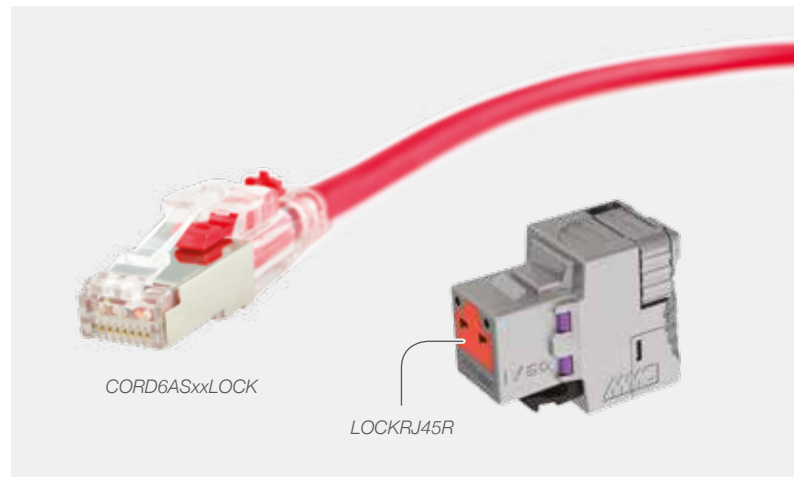
The second function of the blade is to eliminate the “antenna” phenomena due to the surplus of thread copper left by the IDC by acting as an insulating material.



A SECURE SOLUTION

IV: for network securing

Some public areas as schools require a particular protection of the RJ45 outlets. The possible degradation caused by introducing objects inside connectors led Multimedia Connect to develop secured solutions.



Multimedia Connect offers a secured solution range for a protection against malicious connections and disconnections:

- RJ45 port locker
- Locking RJ45 patch cord
- Cabling cabinet including supervision and monitoring



IV6AFS CONNECTOR : 100% TOOLESS CONNECTOR

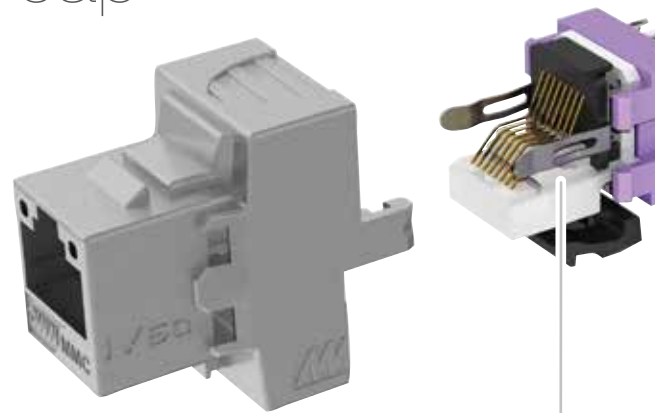
EASINESS OF CABLING



Closing system



Wiring back cap

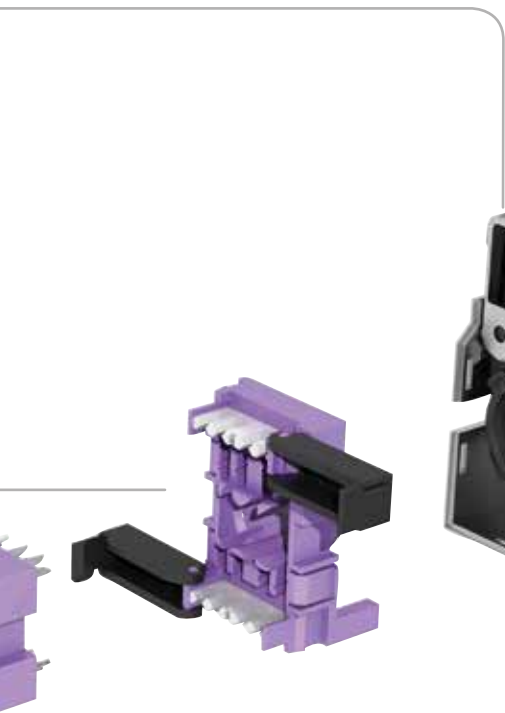
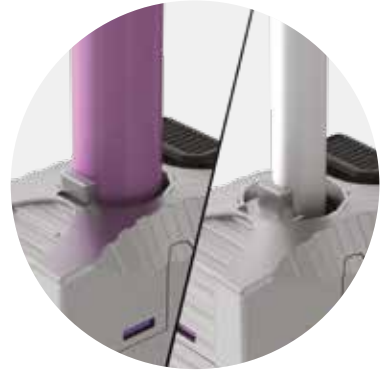


Blade



ELECTRICAL PERFORMANCE

360° shielding



PCB



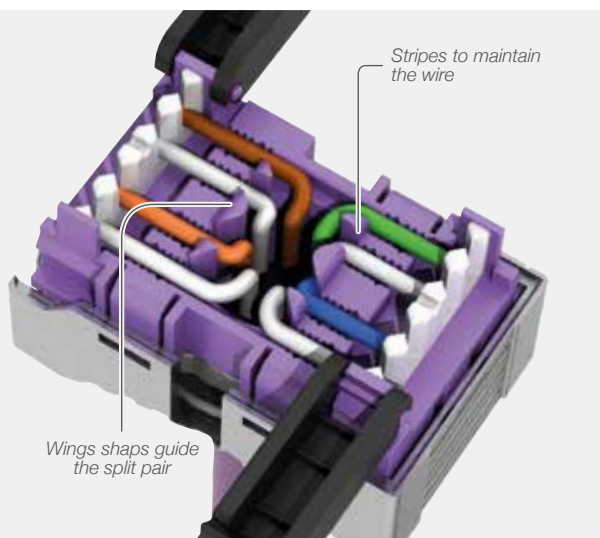
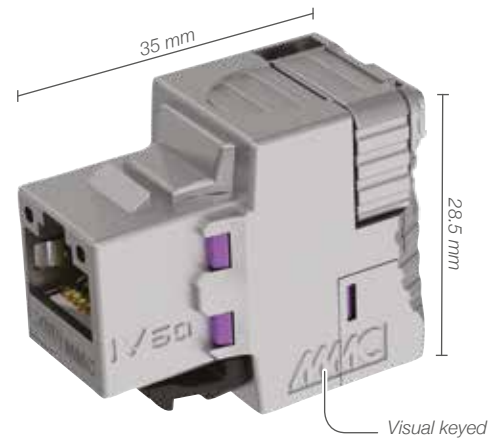
Ergonomics

IV6AFS CONNECTOR : 100% TOOLESSE CONNECTOR

Ergonomics

The IV6AFS connector has a compact shape with a low depth to ensure a perfect compatibility with all wall boxes and faceplates on the market.

The connector design was specifically studied to have a great grip. Its flared forms allow to hold it between the thumb and index and thus the second hand remains free for cabling.



Wiring cap

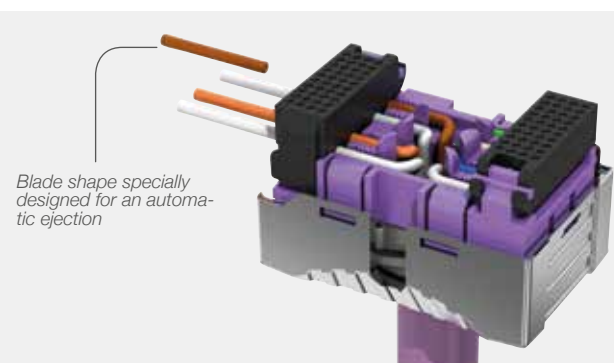
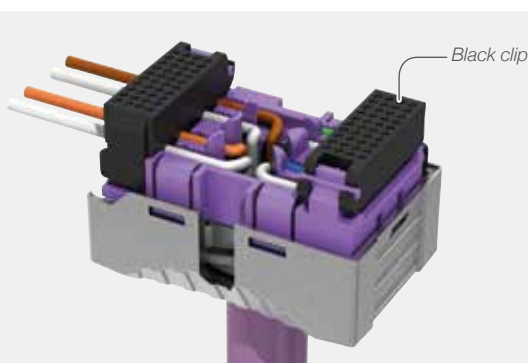
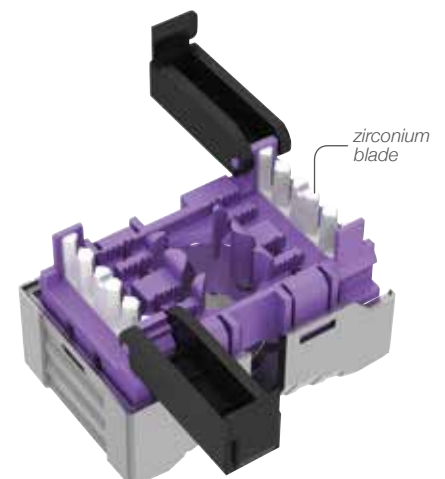
The IV6AFS connector is equipped with a wiring back cap to ease the termination and the pair splitting.

The cable arrival located in the middle of the cap reduces the un-twisted length and guarantees an excellent NEXT value.

Blade

The two ceramic (zirconium) blades cut copper wire up to AWG22. This innovation makes the IV6AFS the first RJ45 connector without tools, placing it among one of the fastest and simplest to connect.

Blades in V shape have been specially studied to eject the wire once the cut is done.



Closing system

The two connector parts are locked by an innovative closing system with a propeller and a lever. The rotation of the propeller ensures the locking of the two parts triggering the insertion of the wire in the IDC. This lever system applies a perfect pressure on the wire with no risks of IDC distortion which could generate a disconnection of the signal.



PCB/Contact

The electrical compensation methods used are based on 4 layers PCB reducing the capacitive phenomena. The contacts benefit from our new technologies of automated insertions.

They have been specifically designed to meet the IEC60512-99 standard which guarantees a contact with the RJ45 plugs even in case of connection and disconnection with a PoE+ link. They also anticipate the PoE++ standard.

360° shielding

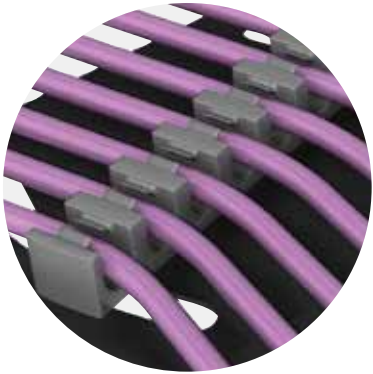
The grounding is ensured by a flange mounted on spring to adapt to the different cable diameters.

360° shielding is always ensured whatever the cable used, offering an outstanding efficiency and a good EMC.

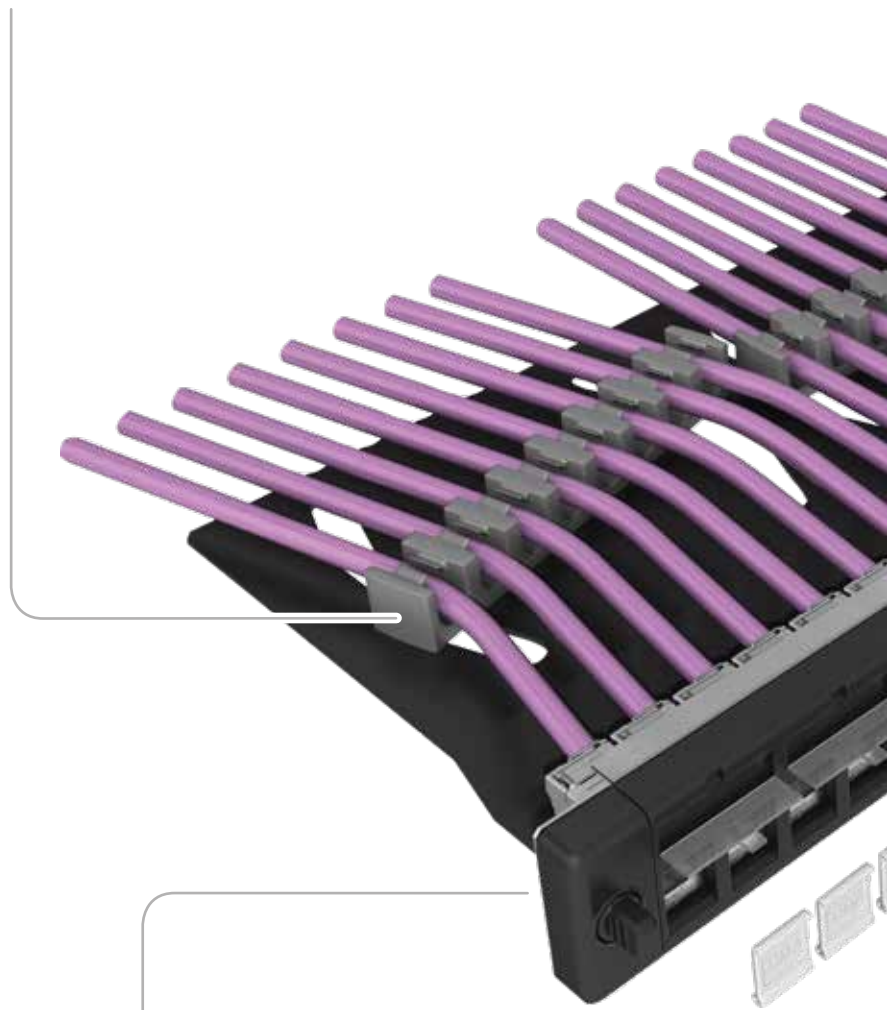
The IV6AFS body is fully shielded in zamak which gives an excellent immunity against electromagnetic interferences.



IVPAN1U : PATCH PANEL



Rear cable management system



Fixing clip



Design



Identification

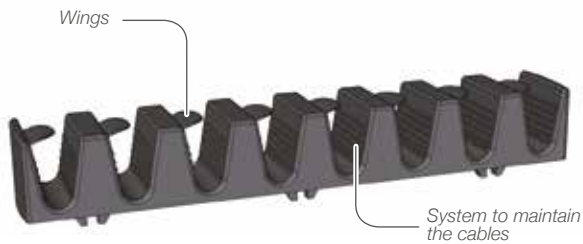
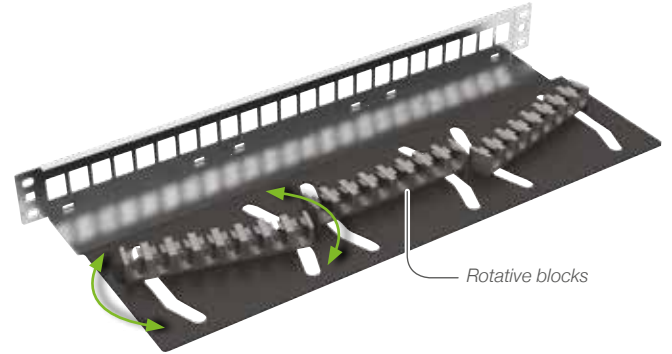
IVPAN1U : PATCH PANEL

Rear cable management system

The rear management system of the IVPAN1U panel is based on an innovative and modular system of 3 independent and rotative blocks.

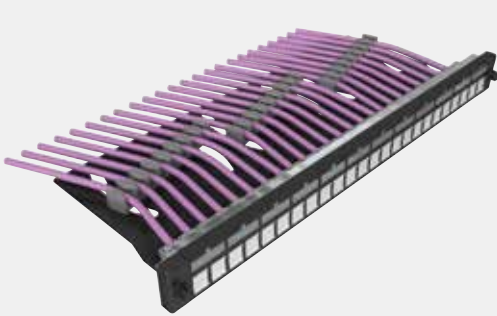
The block wings maintain the cable without cable tie.

They also offer various different possibilities for cable back exit.



The 3 blocks are fixed to the back part of the panel and can be orientated in 3 different directions to provide different exits: lateral right, lateral left, axial or a mix of those 3.

The cable bundles are better organized inside cabinet ensuring the sustainability of the installation.



Lateral left exit



Lateral right exit



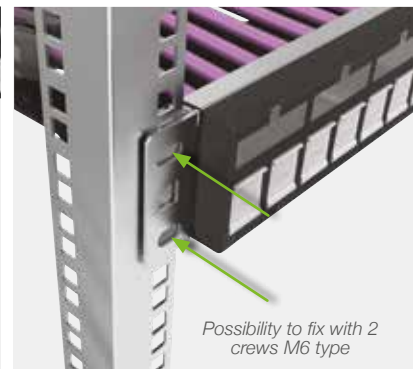
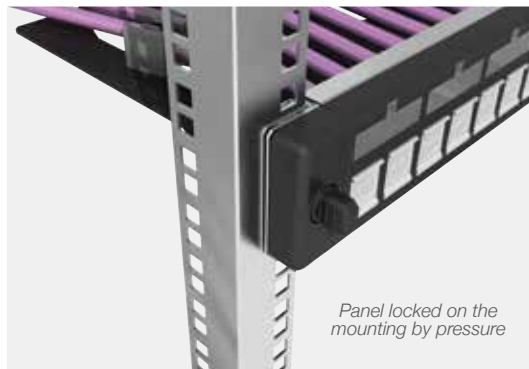
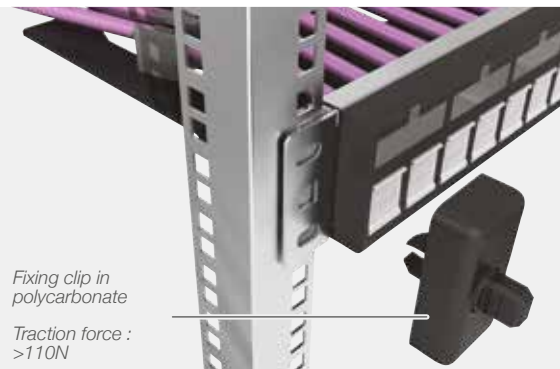
Mixing left / axial / right

Fixing clip

The toolless fixing clip of the IVPAN1U panel has a smart & simple design.

This 1/4 turn system lock ensures a secured fixing even in case of traction and heavy loading.

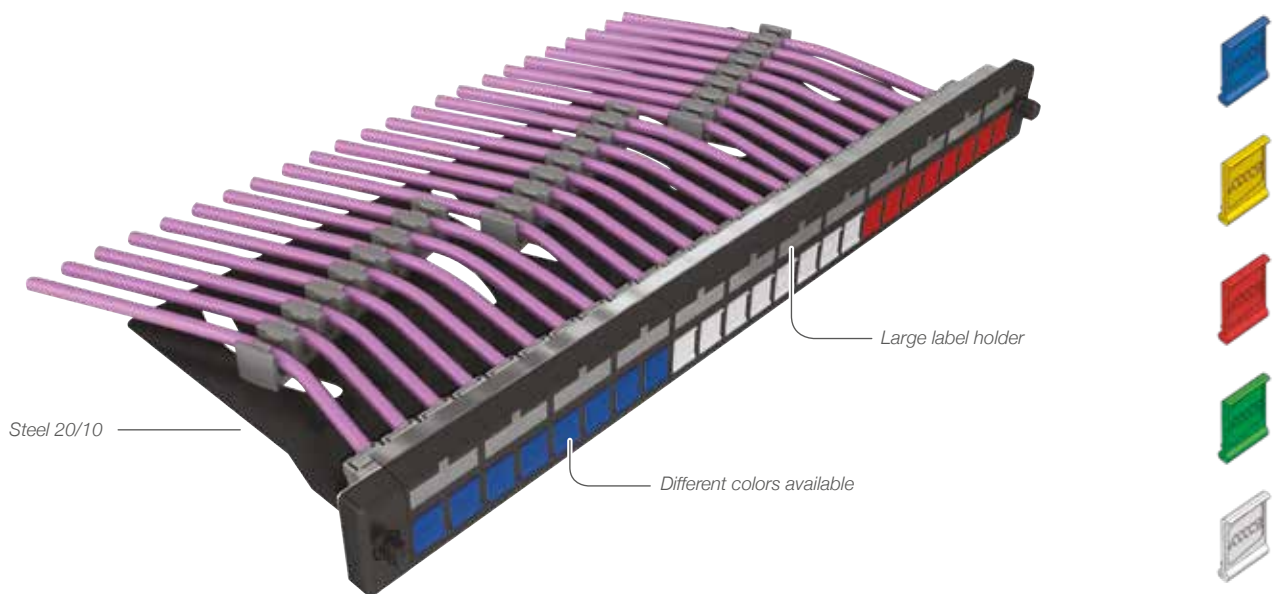
Moreover it can be removed to fix the panel on the 19" mounting with the screw and nuts.



Identification

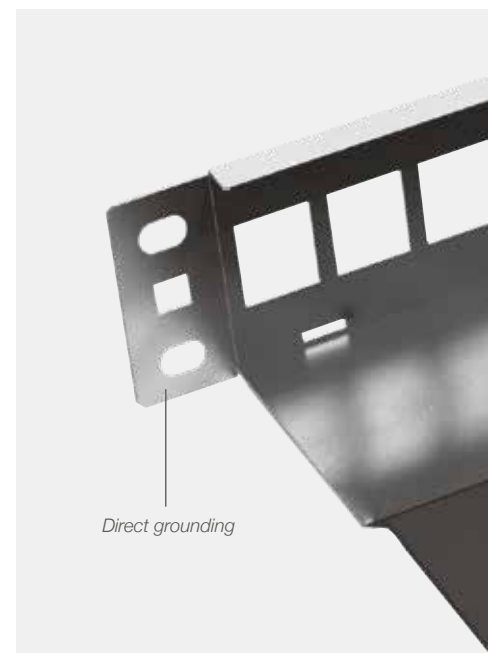
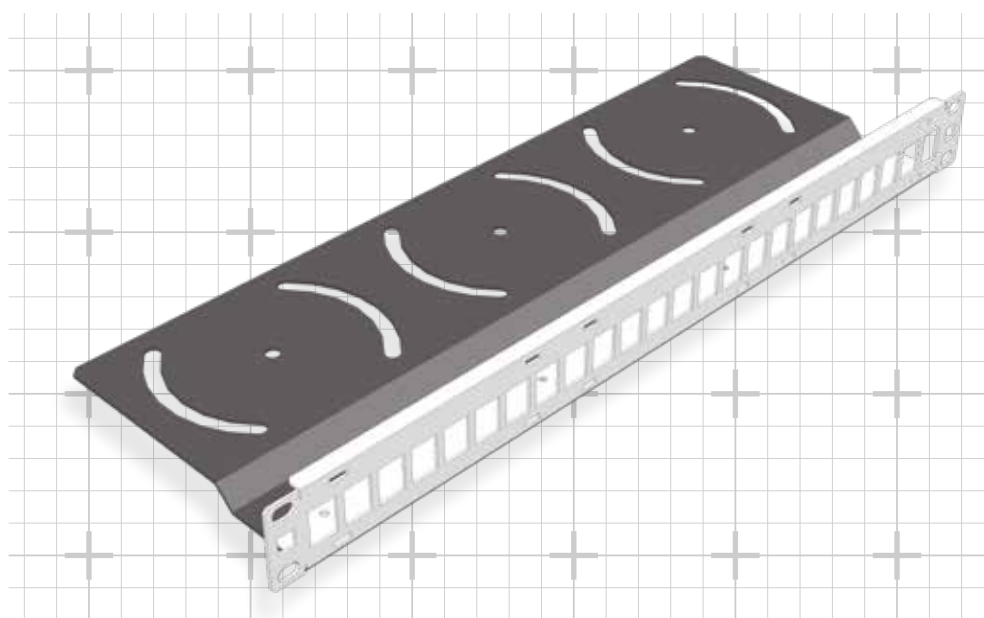
The front face of the panel is equipped with dust shutters which can be removed and enable a color identification of the data flow.

The 12 label holders on the front face offer an identification of the port meeting installation rules and TIA606A standard.



Design

The IVPAN1U patch panel, has an elegant and pur design. The 2 mm thick steel sheet gives a good resistance to the traction. The panel is composed with unpainted steel to ensure direct grounding compliant as per installation rules.



FACEPLATE IV : SECURITY AND DESIGN



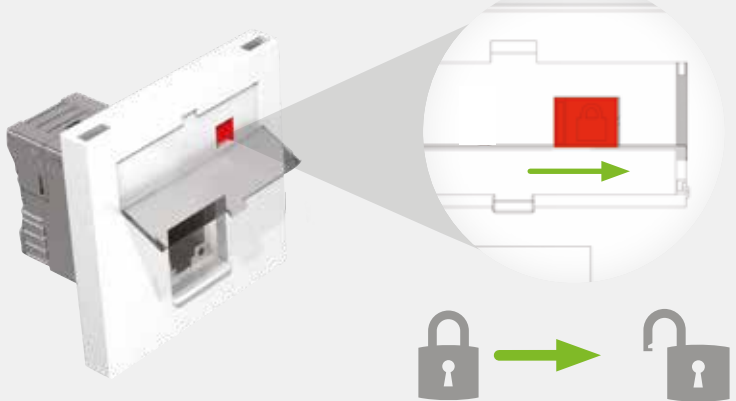
Locking system

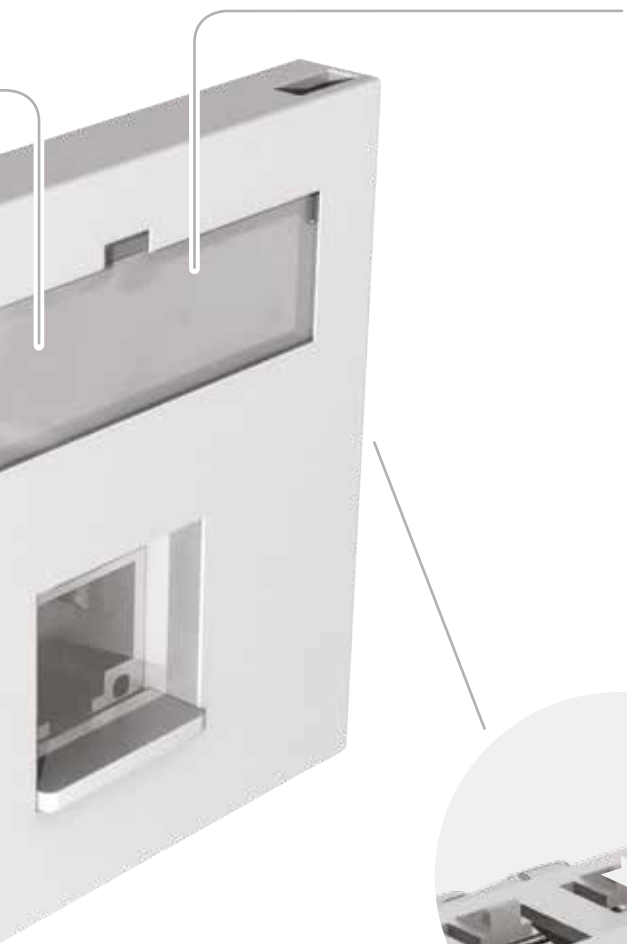


Locking of the faceplate



Unlocking of the faceplate





Identification

Large label holder protected with transparent window.



12 point fixing clip

Fixing clip equipped with 12 points to ensure an excellent fixing.



Design

The refined design of the faceplate offers a discreet installation of the outlet.

ORDERING INFORMATION



PART NUMBER	DESCRIPTION	PACKAGING
IV6AFS8	100% tooless fully shielded CAT6A RJ45 connector - IV range	8
IVPAN1U	24 ports 1U patch panel - IV range	Unit
IVLOCK451C8	1port locking 45x45 faceplate - IV range	8
IVDUSTPANxx8	Colored dust shutter for IVPAN1U patch panel	8

For the color replace the x letter by BL : white or R : red or V : green or J: yellow or B: blue

Environment friendly packaging

We also provide you brand new ecological packaging. The cardboard used for IV6AFS and for IVLOCK451C is biodegradable. The installation instructions are directly printed on the packaging to reduce waste.





www.multimedia-connect.fr



ZAC des hauts de Wissous «Air Park de Paris»
Batiment le Cormoran
3 avenue Jeanne Garnerin 91320 WISSOUS
Tel. +33 (0) 1 69 79 39 80
Email : contact@multimedia-connect.fr



member of the TKH Group <