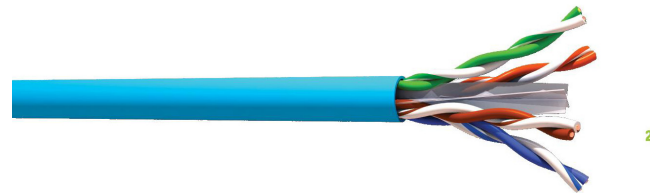
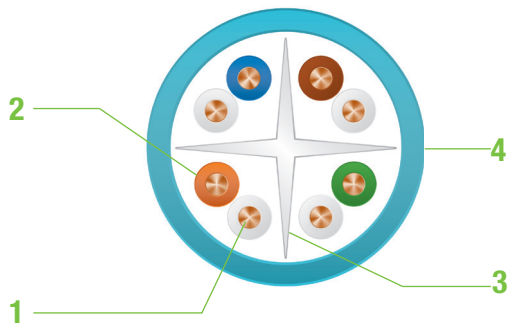




## VG6xSHCy

100Ω U/UTP CAT6 4 pairs cable 250MHz LSZH sheath Cca



- 1. **Conductor** : solid bare copper AWG23
- 2. **Insulation** : PE HD
- 3. **Central member** : White or transparent thermoplastic cross
- 4. **Outer sheath** : LSZH - Light blue RAL 5024

## DESCRIPTIONS

U/UTP cable 4 pairs VG6xSHCy, can be used in horizontal link or vertical configuration as backbone. It constitutes the base of a structured cabling network and can support all the IP application.

Performances of the VG6xSHC exceed the current standards, use with Multimedia Connect connectivity it will ensure conformity with Class E / CAT6 channel.

## APPLICATIONS

Ethernet Base T up to 1Gbits/s	TOKEN RING 4/16 MBITS
ISDN	ATM 155, 622Mbits/s & 1.2Gbits
IEEE 802.3 af PoE	

## STANDARDS

<b>CABLE</b>	IEC 61156-5 CAT6
<b>SYSTEME</b>	ISO / IEC 11801 Ed2.2 Class E

## ELECTRICAL PROPERTIES

Max linear electrical resistance	95 Ω/Km
Mutual capacity (nom)	45 pF/m
Characteristic impedance	100 +/- 15Ω
Nominal Velocity Propagation	69%





## VG6xSHCy

100Ω U/UTP CAT6 4 pairs cable 250MHz LSZH sheath Cca

### ENVIRONMENTAL PROPERTIES

CPR Level	Cca - s1,d1,a1
Fire behaviour	IEC 60332-1
Operating Temperature	-20°C / +70°C
Minimum bending radius	8 x cable diameter
<b>Compliant to RoHS</b>	

### TRANSMISSION PERFORMANCES @20°C

(\*) standard : values from IEC 61156-5

Freq (Mhz)	Attenuation		NEXT (dB)		PS NEXT (dB)		ACR-F (dB)		PS ACR-F		RL (dB)	
	standard (*)	typical value	standard (*)	typical value	standard (*)	typical value	standard (*)	typical value	standard (*)	typical value	standard (*)	typical value
4	3.8	3.5	66.3	69	63.3	66	55.8	67	52.8	64	23.0	25
10	6.0	5.5	60.3	63	57.3	60	47.8	60	44.8	57	25.0	28
16	7.6	6.9	57.2	60	54.2	57	43.7	66	40.7	63	25.0	28
31.25	10.7	9.8	52.9	55	49.9	52	37.9	51	34.9	48	23.6	27
62.5	15.5	13.9	48.4	51	45.4	48	31.9	43	29.1	40	21.5	25
100	19.9	17.5	45.3	48	42.3	45	27.8	40	24.8	37	20.1	25
200	29.1	25.3	40.8	44	37.8	41	21.8	34	18.8	31	18.0	24
250	33.0	28.3	39.3	42	36.3	39	19.8	27	16.8	24	17.3	23

### ORDERING INFORMATION

CABLE 4 PAIRS			
P/N	DESCRIPTION	EXTERNAL DIAMETER	PACKAGING
VG64SHC	CAT6 CABLE U/UTP 4 PAIRS LSZH Cca	6.5 mm	DRUM 1000M
VG64SHC5	CAT6 CABLE U/UTP 4 PAIRS LSZH Cca		DRUM 500M