

REF: IVPAN1U

19" patch panel 24 ports 1U – IV range



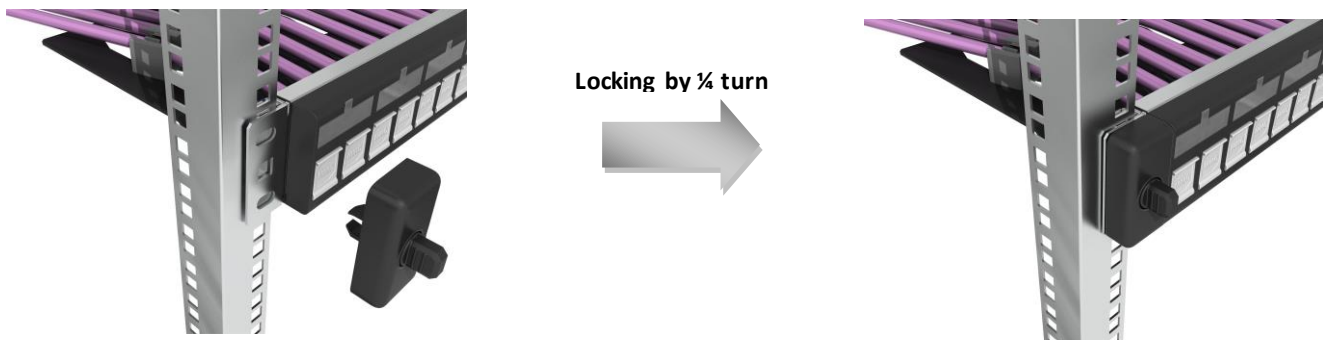
Descriptions

The IVPAN1U patch panel is an innovative panel with a fixing system without screw and nuts. The modularity of the rear management block allows a perfect management of the bundle cable.

- Patch panel 24 RJ45 ports – 1U
- Unpainted panel : stainless steel 20/10 for an automatic grounding

• InnoVative hanging system

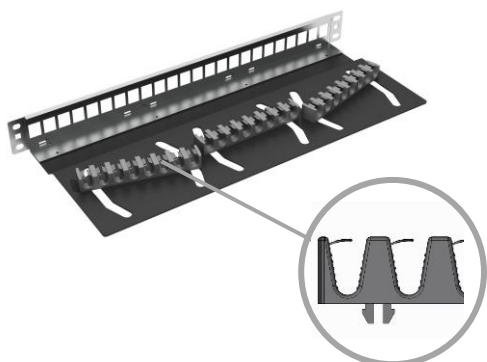
- Hanging system without screw and nuts
- Locking by ¼ turn : polycarbonate key
- Fixing on the mounting by pressure : tensile traction > 110N
- System can be removed for a classic fixing with screw and nuts type M6



REF: IVPAN1U

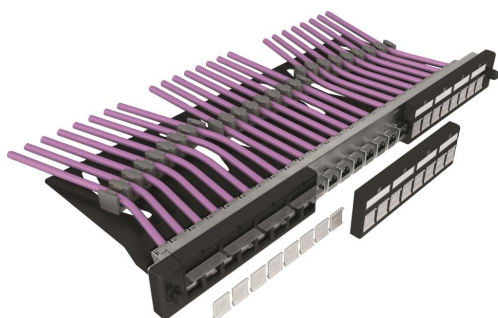
19" patch panel 24 ports 1U – IV range

• InnoVative rear management cable



- Rear part equipped with 3 independent and rotative management cable block
- Management cable block in polycarbonate
- Blocks composed with wings in polypropylene in order to fix the cable without cable tie
- Stripes to maintain the cable and ensure a good RL

• InnoVative identification system

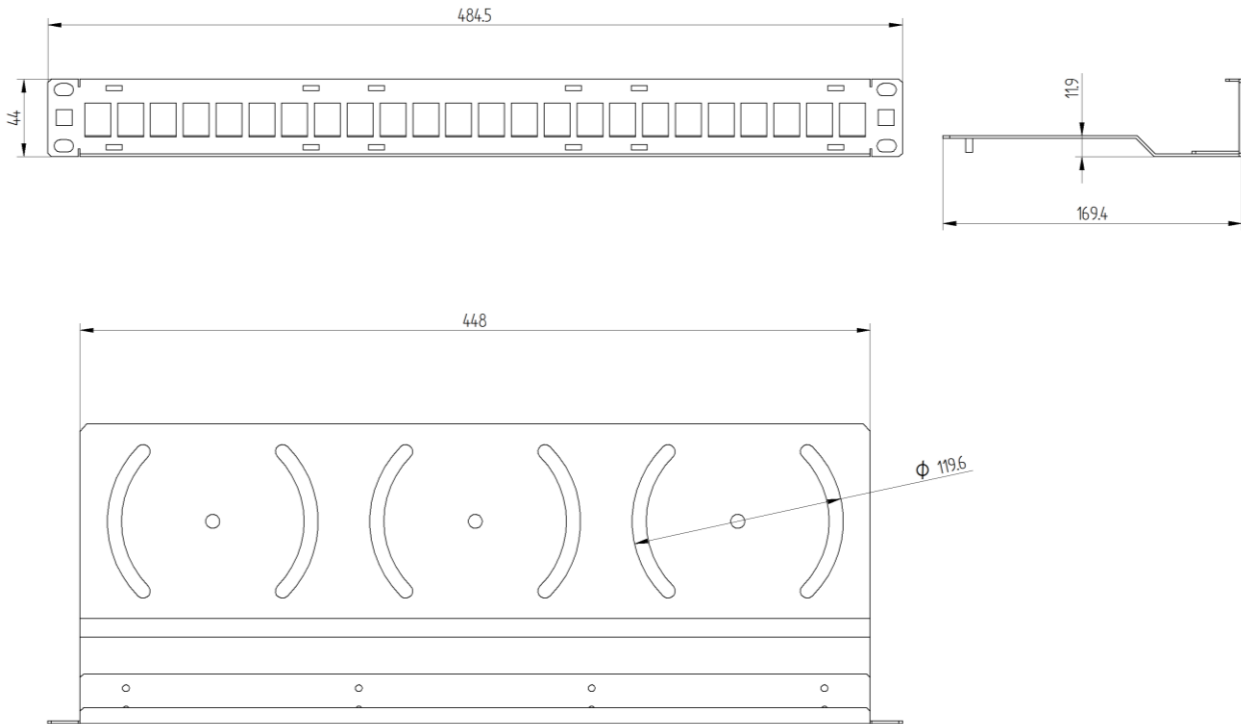


- Front face equipped with 3 polycarbonate module
- RJ45 ports equipped with removable dust shutter : colored dust shutter available to allow an identification of the cabling system
- Large label holder, protected by a flapping window, for a clear and readable identification of the RJ45 ports

REF: IVPAN1U

19" patch panel 24 ports 1U – IV range

Drawings & dimension



Related product

P/N	Designation	Packaging
IVDUSTPANxx8	Colored dust shutter for IV panel	8
IV6AFS8	100% tooless CAT6A full shielded RJ45 connector	8

For the color replace the X letter by: BL for white or R for red, V for green, J for yellow or B for blue

Ordering information

P/N	Designation	Packaging
IVPAN1U	19" patch panel 24 ports 1U	Unit