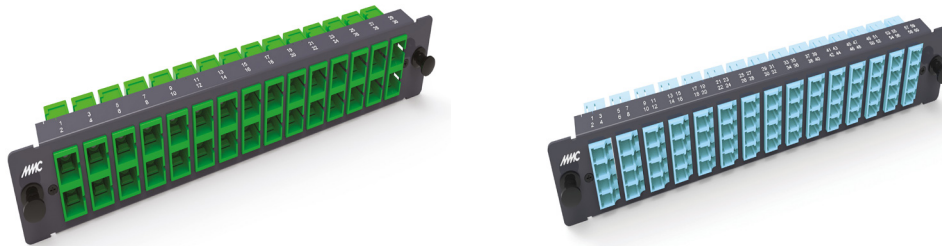


DCFUxxSCyLCz

Unequipped half front Panel for DC PANEL 1U

+ BENEFITS

- Modularity thanks to removable Front Panels
- Port numbers printed on top
- Easy installation: Reversible in order to adapt the type of adapters and polarity
Compatible with screwless adapters



APPLICATIONS

This range of DCFU1U half-front panels is purely dedicated to DC panels and to high density applications such as Data Center networks. It perfectly fulfills the speed and performance requirements of storage networks. The product is delivered un-equipped and can receive screwless adapters such as SCS, SCD, LCD or LCQ and as well MTP.

The range allow a modular and customized cabling, depending on the type of performance required.

STANDARD

PROTECTION ENVIRONNEMENTAL PROTECTION:

RoHS et SvHC compliant

MECHANICAL PROPERTIES

MATERIAL : Steel metal sheet 12/10

COLOR: Epoxy painting dark RAL 7016

DIMENSIONS : L 202.5 mm x P 9.5 mm x H 34.5 mm

WIEIGHT: 0.8 Kg

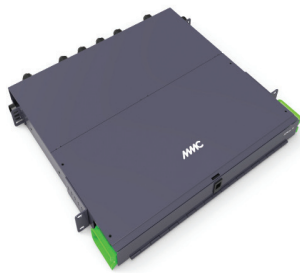
PACKAGING: Unit

PERFORMANCE

CONNECTOR
IEC-61754-20 (LC connectors)
IEC-61754-7 (MPO/MTP cable connectors)
TIA 568/EIA-604-5 (FOCIS 5 for MPO connectors)
TIA/EIA-455-21a

SYSTEM
TIA 568 - C.3
ISO 11801 Ed3
EN 50173

RELATED PRODUCTS



DCPANEL1U



48MMTSCSISSFL

DESCRIPTION	PART NUMBER	PACKAGING
1U 19" HIGH DENSITY OPTICAL PANEL		
1U 19" high density optical panel	DCPANEL1U	Unit
SCREWLESS ADAPTERS WITH LASER PROTECTION		
Part Number	48 xx T yyy ISFL ww	Pack of 6
Replace xx by the type of performance	MM (Multimode) or SM (Singlemode)	
Replace yy by the type of adapters	SCS,SCD,SCAS,SCAD, LCD,LCQ,LCAD,L-CAQ	

ORDERING INFORMATION

PART NUMBER	DESCRIPTION	PACKAGING
DCFU1U30SCSLCD	Unequipped front panel with 30 screwless SCS, LCD or MTPS adapters	Unit
DCFU1U15SCDLCQ	Unequipped front panel with 15 screwless SCD, LCQ or MTP adapters	Unit