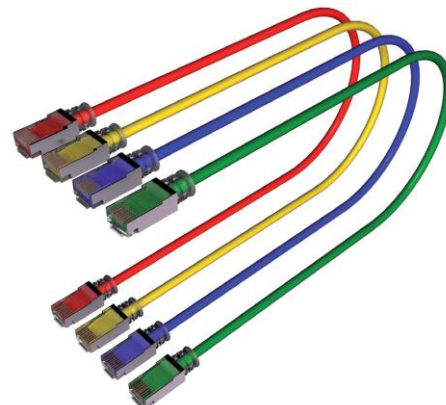
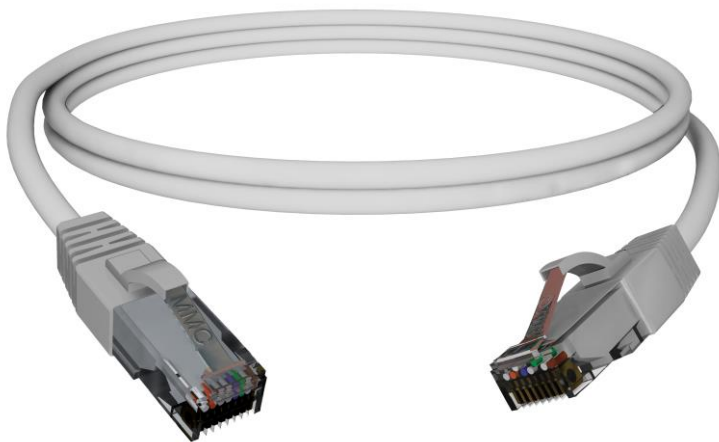


## REF : CORD6UxM

Patch cord 4 pairs RJ45 U/UTP– CAT 6 – 250 MHz



### Description

- Moulded Patch cords u/UTP – 4 pairs – Category 6 – 250 MHz
- 5 different available length : 0.5m - 1m – 2m – 3m – 5m – 10m
- 5 different available color : blue/yellow/red/green/grey
- Color Coding : EIA/TIA 568 B
- Plug UTP: RJ45 8P 8C– contacts gold 50 pinch
- Individual packing

### Standards / Performances

EIA/TIA 568-C.2  
ISO 11801 Ed 2  
EN 50173-1

### Characteristics

Fire behavior	IEC 60332-1 / NF-C 32070 C2
Operating temperature	-20°C to 70°C
Bending radius	8 x cable diameter
Conformity to RoHS	

### Ordering information

Item No	Designation	Lenght	Packaging
CORD6UxM	CAT6 unshielded patch cord	X = 0.5/1/2/3/5 and 10m	Unit