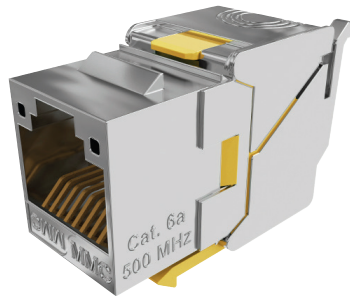


BC6AFSTLBWx

Tool Less CAT6A 360° shielded RJ45 AWG22 Keystone Jack

+ BENEFITS

- Component and 4pPoE certified
- Time saving : easy big wire cable connection AWG22
- Universality: adapted to all Keystone panel and faceplate
- Bending radius of the connected cable optimized : compact connector



DESCRIPTION / APPLICATIONS

BC6AFSTLBW is a tool-less RJ45 CAT6A 360° shielded connector, dedicated to AWG22 cables. It provides performances in accordance with cabling standards thanks to its features:

- Tool-less connection using a wiring comb equipped with a splitter to facilitate de-pairing and reduce twisting lengths
- Very compact connector with a depth of 28.25mm: compatible with most of the boxes and faceplates on the market
- Two fins attached to the connector body for easy connector locking

This connector has been designed to handle the issues of PoE heating and the use of thicker cables:

- Optimized IDC to reduce heat generation.
- PCB circuit to handle PoE applications and CAT6A performances and to improve high frequency NEXT values

PERFORMANCES

CONNECTOR	SYSTEM
IEC 60603-7-5 CAT6A	TIA 568.2-D CAT6a
FCC Part 68 subpart F	ISO 11801 Ed3
TIA 570-B	EN 50173-1
UL 18663	IEEE 802.3bt (4pPoE)

TECHNICAL PROPERTIES

IDC	Bronze + Platinum / Cu
Section	AWG24 to AWG22
Contact	Bronze, Platinum Ni and Gold 1.2µm
Color code	T568A & B

ELECTRICAL PROPERTIES

Contact resistance	< 20 mΩ IEC 60512-2-1 Test 2a
Insulation resistance	> 500MΩ @100V DC IEC 60512-3-1 Test 3a
Tension	> 1000V DC contact to contact >1500V DC contact to screen (IEC 60512-4-1 Test 4a Method A)
Insertion cycle	> 1000
Operating voltage	< 72V DC
Power rating	90W (4pPoE) - Test IEC 60512-99-002 - 2A per wire
Operating Temperature	-40°C to +70°C

ORDERING INFORMATION

PART NUMBER	DESCRIPTION	PACKING
BC6AFSTLBW8	RJ45 CAT6A 360° shielded AWG22 tooless connector	8
BC6AFSTLBW100	RJ45 CAT6A 360° shielded AWG22 tooless connector	100