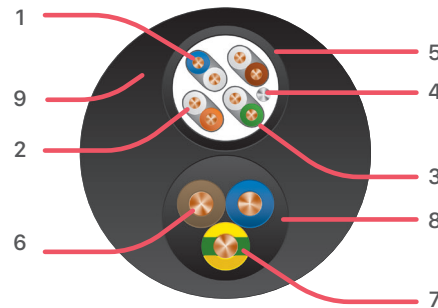


AUDIOLAN6W

S2C4S6 + 3G 1.5

+ ADVANTAGES

- Two cables in one : Data cable & power cable



S2C4S6 CABLE

1. Core : Bare copper - AWG 26
2. Conductor insulation : Polyethylene
- Color coding of pairs :
 Pair 1 : Blue/ White - Blue
 Pair 2 : Orange/ White - Orange
 Pair 3 : Green/ White - Green
 Pair 4 : Brown / White - Brown
3. Pair shielding : Aluminium foil / Blue Polyester
4. Drain wire : 7 x 0.16 mm
5. Outer jacket : PVC - matte black

POWER CABLE

6. Core : Copper - Class 5 - IEC 60228
7. Insulation : PVC - Green/ Yellow - Brown & Blue
8. Outer jacket : Ethylene Propylene - Black

OUTER JACKET

9. Extra flexible PVC

DESCRIPTION / APPLICATIONS

- Data transmission in 10/100/1000 Mbit and 10 Gbit in mobile application
- Projector power
- Compatible with Ethernet, Ethersound, Cobranet, Dante protocols

STANDARD

CABLES : IEC 60228 - Class 5

CPR : Eca

FIRE COMPORTEMENT : IEC 60332-1

ELECTRICAL CHARACTERISTICS

S2C4S6 CABLE DATA

INSULATION RESISTANCE : $\geq 5000 \text{ M}\Omega/\text{km}$

UNBALANCE CAPACITY : 1600pF/ KM

VELOCITY : 66% of C.

POWER CABLE

TEST VOLTAGE : 2000

INSULATION RESISTANCE AT 20°C : $\geq 5000 \text{ M}\Omega/\text{km}$

UNBALANCE CAPACITY : 1600pF/ KM

MECHANICAL CHARACTERISTICS

OPERATING TEMPERATURE :

- Fixed : $-20^{\circ}\text{C} / +70^{\circ}\text{C}$

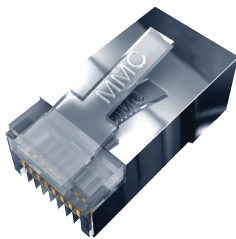
- Mobile : $-10^{\circ}\text{C} / +70^{\circ}\text{C}$

MINIMUM BENDING RADIUS :

- Fixed : $10 \times \varnothing$

- Mobile : $5 \times \varnothing$

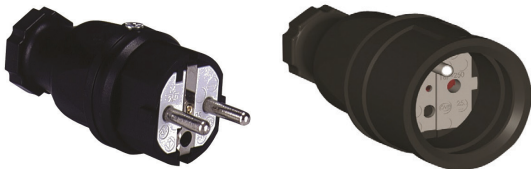
ASSOCIATED PRODUCTS



MMCRJ45SC6SI
Shielded RJ45 Plug



NE8MX6
Neutrik Ethercon



PC16F ou PC16M
Power connector

ORDER INFORMATION

PART NB	DESCRIPTION	OUTER DIAMETER	PACKAGING
AUDIOLAN6W	S2C4S6 + 3G 1.5	21.00 mm	Custom length